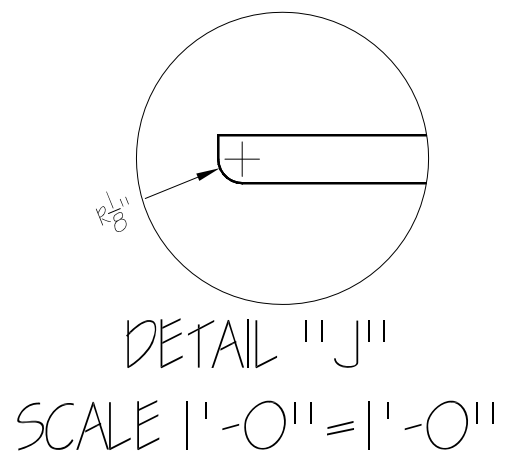
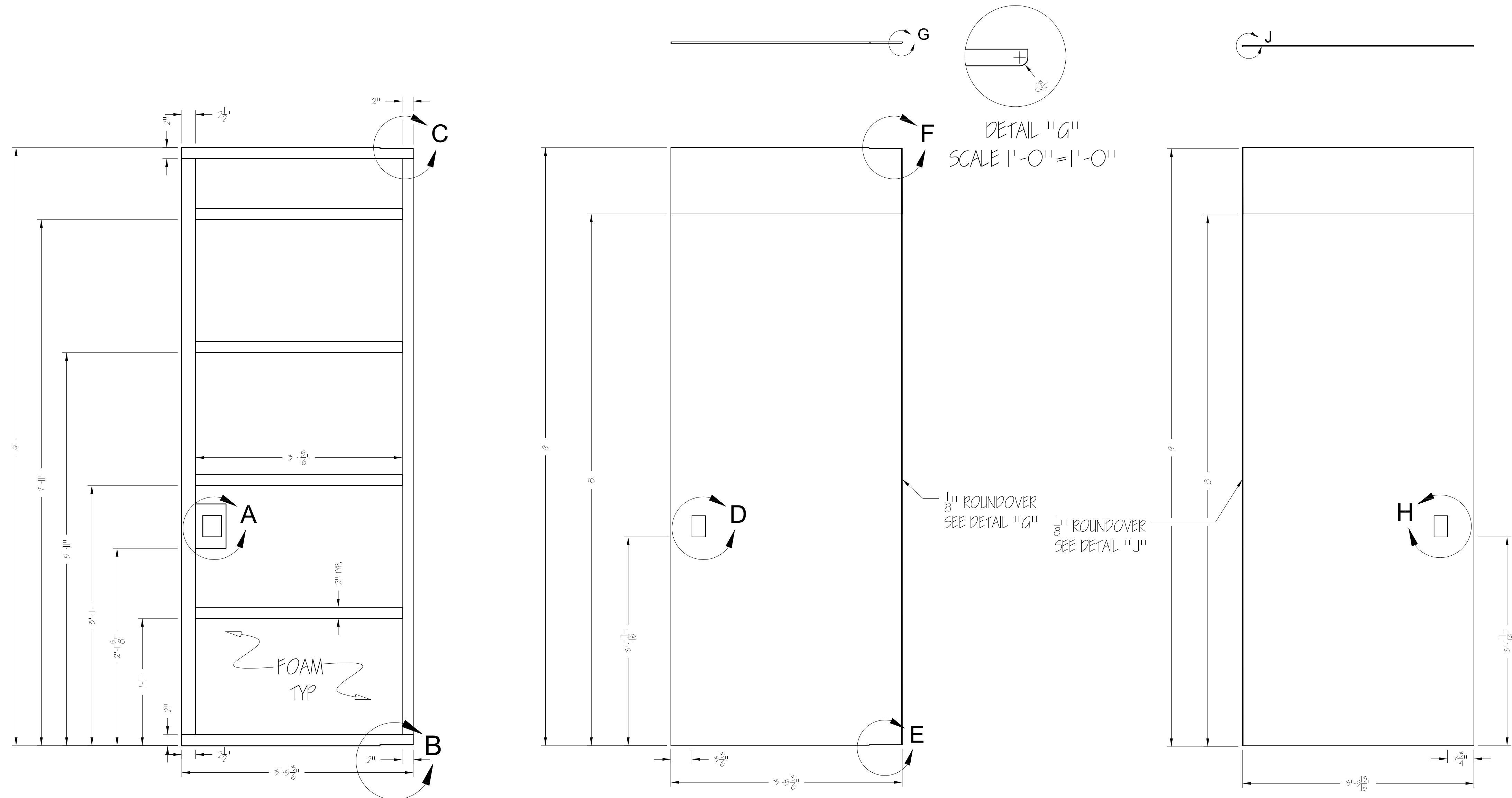


WOMEN BEWARE WOMEN
PALACE DOORS - FRAMES AND SKINS

DOORS ARE PNEUMATICALLY ACTUATED AS A CABLE CYLINDER TURNING BEAVES.



DETAIL "G"
SCALE 1'-0" = 1'-0"

DETAIL "J"
SCALE 1'-0" = 1'-0"

1/8" ROUND OVER
SEE DETAIL "G"
1/8" ROUND OVER
SEE DETAIL "J"

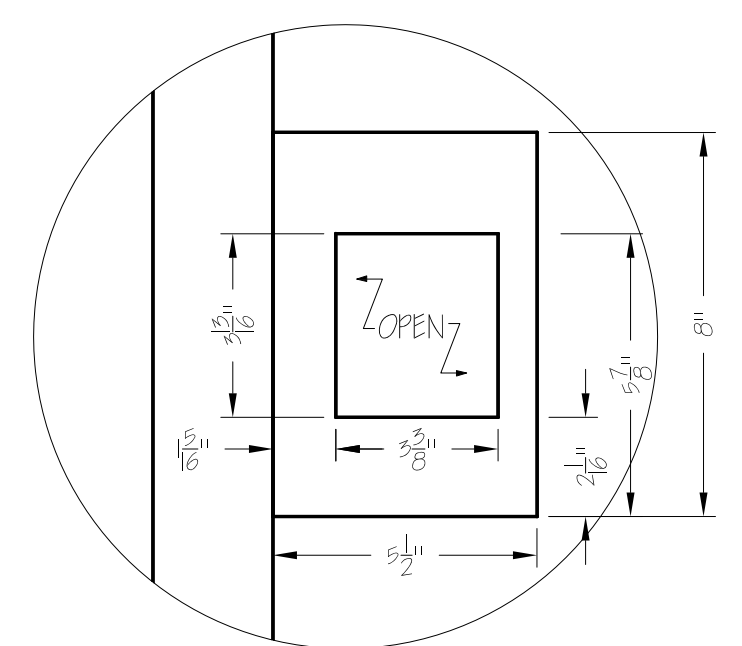
NOTES:

- BUILD TWO OF EACH (ONE IS A REVERSE AND REPEAT OF THE OTHER).
- ASSEMBLE AS STRESS-SKINED FLATS WITH 1/4" MDF ON *BOTH* SIDES AND PROPERLY GLED JOINTS.
- USE FINISH NAILS AS FASTENERS.
- SPACKLE ALL FASTENER HOLES AND SAND BEFORE SENDING TO PAINTS.
- SEE ELISE WITH ANY QUESTIONS/ CONCERNS.

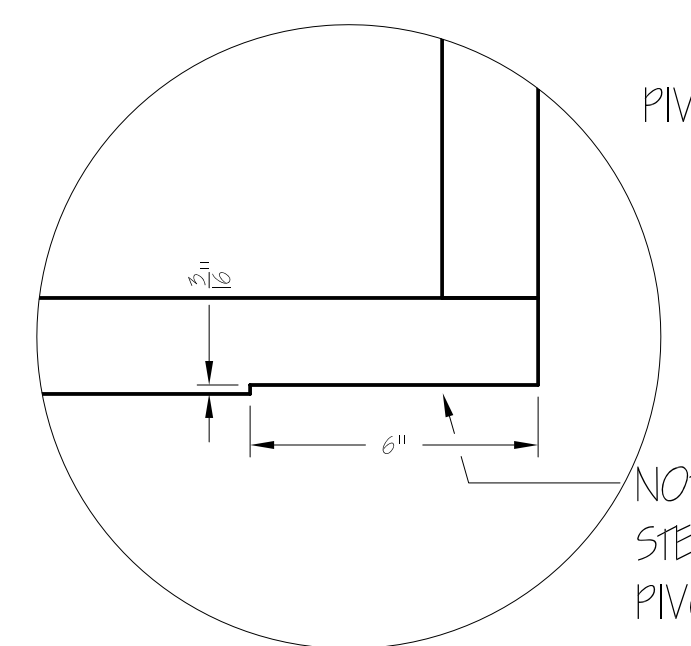
1
251
PALACE DOOR - FRAMES 1" = 1'-0"
- *BUILD 2 (ONE IS REVERSE AND REPEAT)*
- ALL FRAMING IS 5/4 PINE PLANED TO 1" ACTUAL THICKNESS
- NOTE MORTISES FOR PIVOT POINTS (DETAILS "B" AND "C")
- ASSEMBLE AS A STRESS SKIN WITH 1/4" MDF FACE AND BACK
- 1" THICK FOAM FILLING (IF THERE'S ANY LEFT)

2
251
PALACE DOOR - FACE SKIN FRONT ELEVATION 1" = 1'-0"
- *MAKE 2 (ONE IS REVERSE AND REPEAT)*
- USE 1/4" MDF
- SEAL ALL EXTERIOR EDGES WITH TIEBOND II
- NOTE MORTISES FOR PIVOT POINTS (DETAILS "E" AND "F")
- ATTACH TO SKIN WITH GLUE AND FINISH NAILS

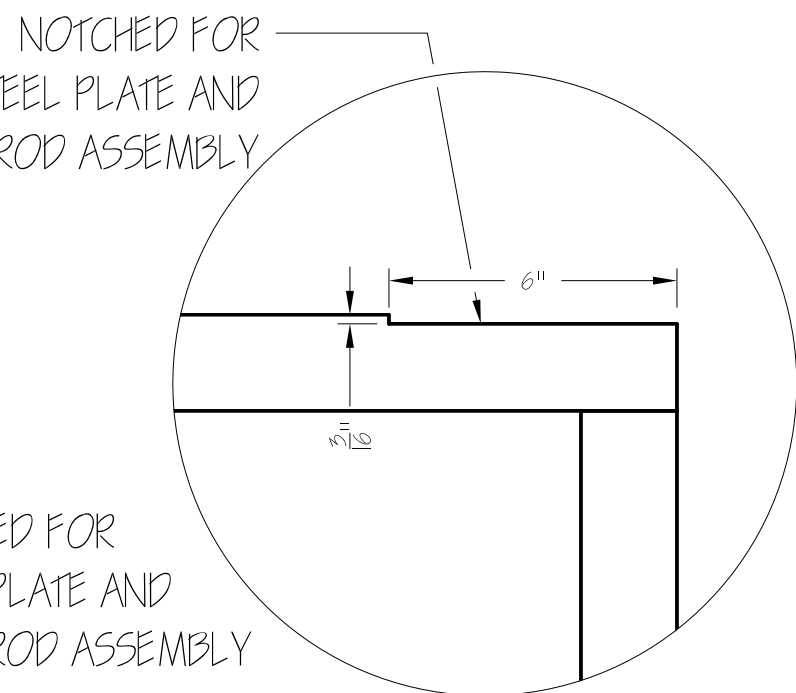
3
251
PALACE DOOR - BACK SKIN REAR ELEVATION 1" = 1'-0"
- *THIS IS A REAR ELEVATION*
- *MAKE 2 (ONE IS REVERSE AND REPEAT)*
- USE 1/4" MDF
- SEAL ALL EXTERIOR EDGES WITH TIEBOND II
- NOTE MORTISES FOR PIVOT POINTS (DETAILS "E" AND "F")
- ATTACH TO SKIN WITH GLUE AND FINISH NAILS
- THIS LAYER *DOES NOT* GET NOTCHED FOR PIVOT PLATES



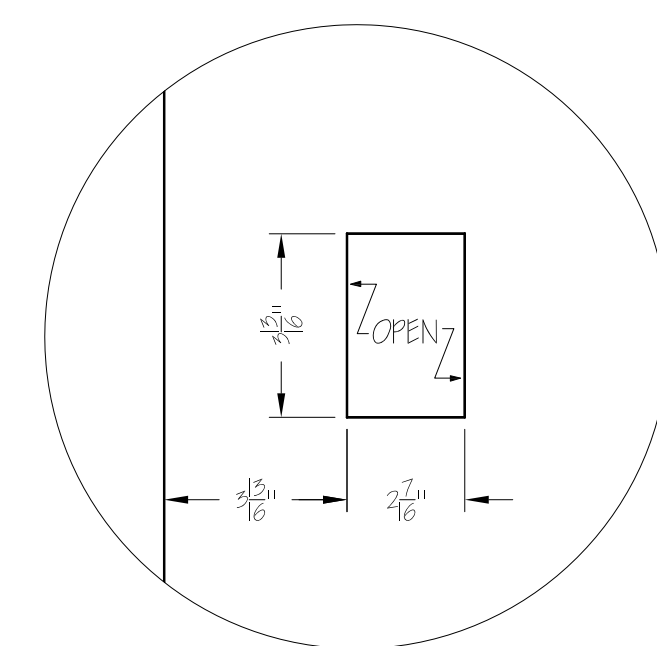
DETAIL "A"
SCALE 3" = 1'-0"



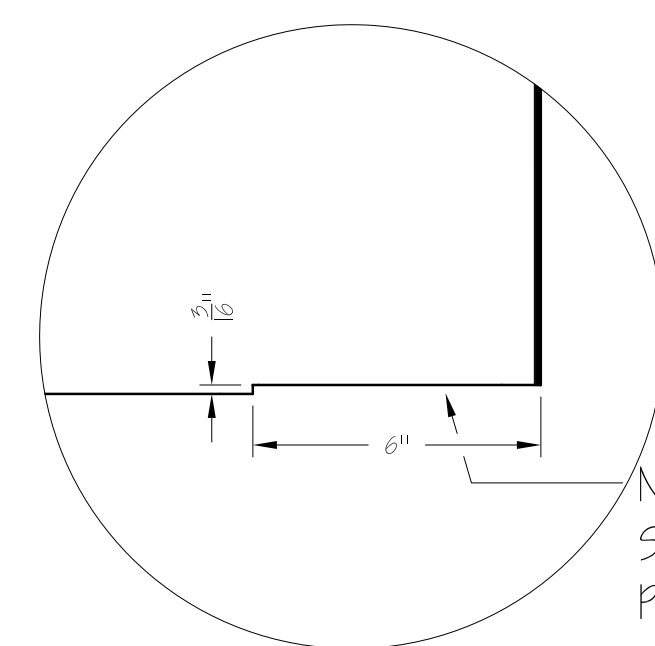
DETAIL "B"
SCALE 3" = 1'-0"



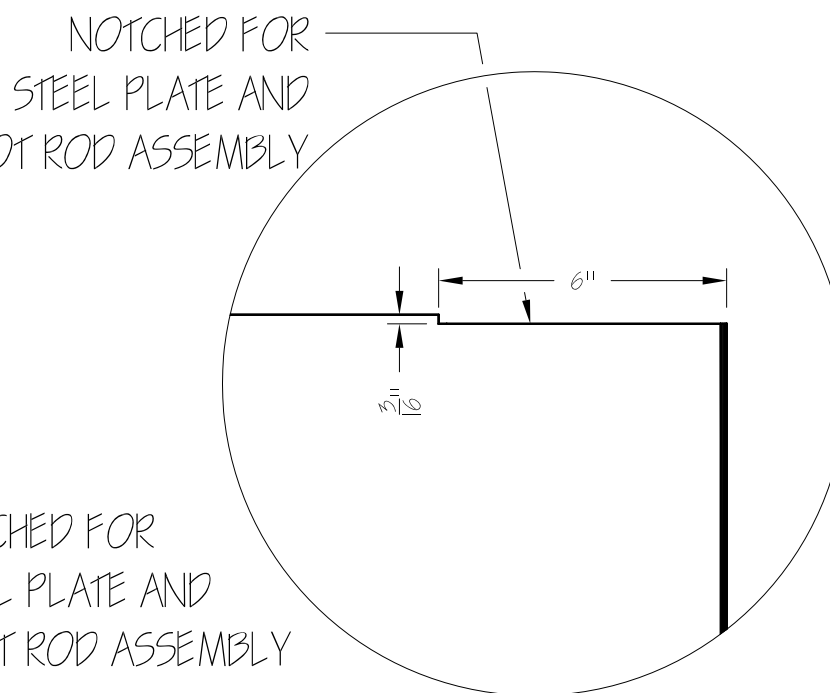
DETAIL "C"
SCALE 3" = 1'-0"



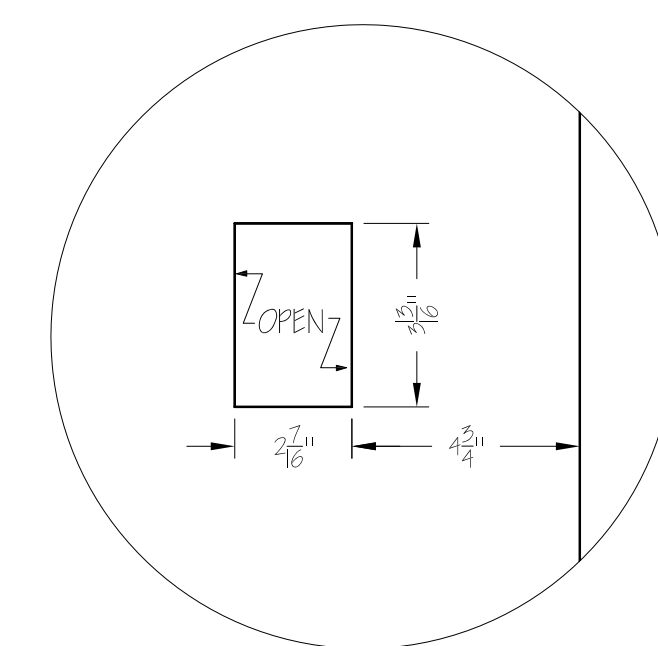
DETAIL "D"
SCALE 3" = 1'-0"



DETAIL "E"
SCALE 3" = 1'-0"



DETAIL "F"
SCALE 3" = 1'-0"



DETAIL "H"
SCALE 3" = 1'-0"

DIRECTOR: LEO RA MORRIS	
DESIGNER: CLAIRE DELUSO	
TD: ELISE MASUR	
PNG DATE: 12/11/15	
INV CODE	5305
DESIGNER REF	SHEET #
	251
PNG BY	EVM
SCALE	AS SHOWN